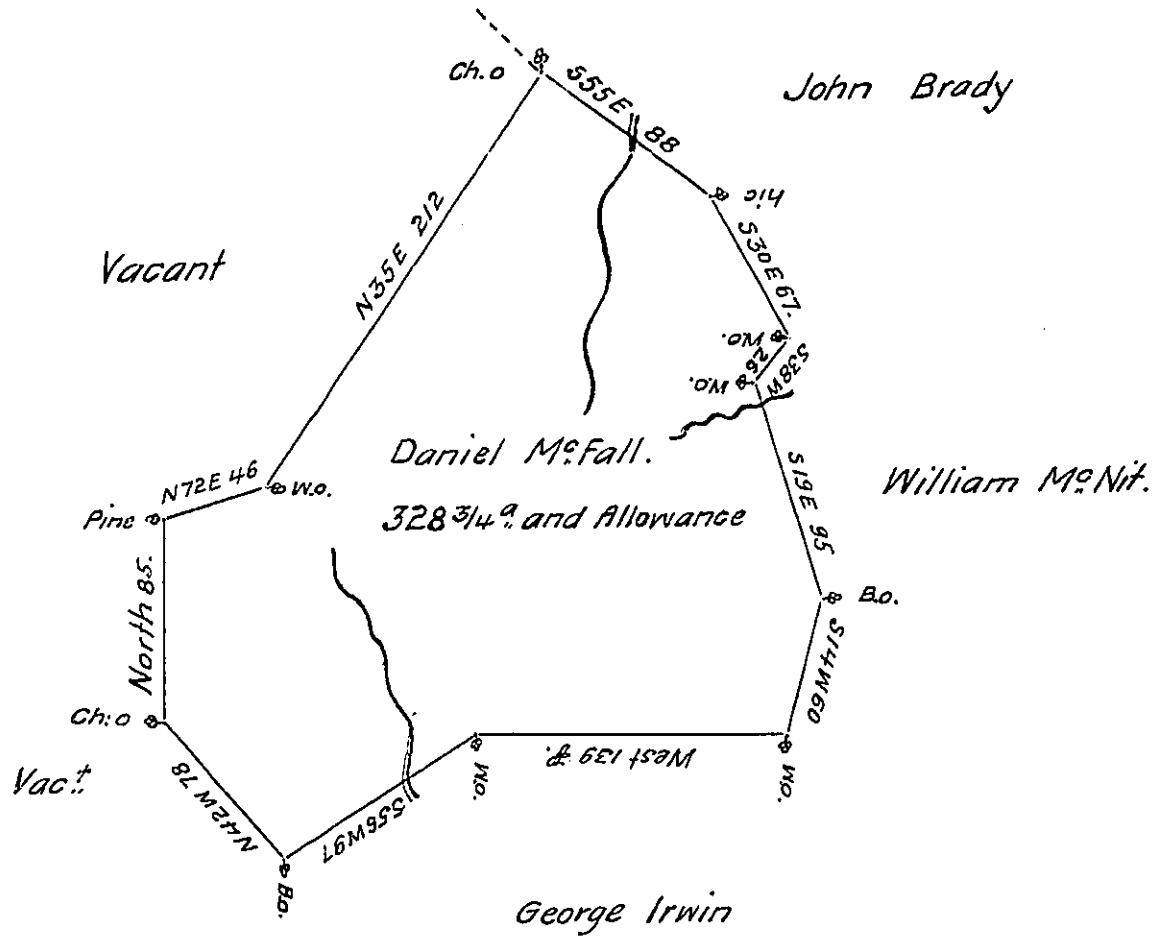


FORM NO 1.



In Pursuance of an Order No 2212 Dated the 22^d day of Decem^r. 1766 Surveyed the 20th Day of May 1767 the above Described Tract of Land for Daniel McFall, situate on the West side of Shavers Creek in the County of Cumberland Containing three hundred twenty Eight and an half Acres and the usual Allowance of Six Acres & Cent for Roads &c^a.

W^m. Richard Tea Depy Survey^r.

To John Lukens Esq^r.
Surveyor General.

IN TESTIMONY that the above is a copy of the original remaining on file in the Department of Internal Affairs of Pennsylvania, made conformably to an Act of Assembly approved the 16th day of February, 1833, I have hereunto set my Hand and caused the Seal of said Department to be affixed at Harrisburg, this thirteenth day of August 1908

Henry Howard
Secretary of Internal Affairs.